

"I think Groundwork is really awesome! It is really quite easy to set up & works way better than a lot of operations-type programs I've tried. I like it better than What's Up, or Nagios® alone, or SecureCentral, etc."

William Draper
 Director of IT Services
 Technical Alternatives, Inc.

SYSTEM REQUIREMENTS

Recommended Minimum Hardware
 Small installation, up to 150 devices:

- 2 GB RAM
- 1 CPU, 2.8 GHz P4 or better
- 80 GB disk

For evaluation purposes, any Pentium-class machine will work: simply reduce the polling frequency

RPMs available for:

- Red Hat Linux Enterprise Linux 5 Server, 32 or 64-bit.
- Red Hat Linux Enterprise Linux 4, 32 or 64-bit.
- CentOS 5, 32 or 64-bit.
- CentOS 4, 32-bit.
- Novell SuSE Linux Enterprise Server (SLES) 10, 32 or 64-bit.
- Novell SuSE Linux Enterprise Server (SLES) 9, 32-bit.
- Ubuntu 6.06 Server LTS, 32-bit.
- Debian 4, 32-bit.

All install packages available at:
<http://www.groundworkopensource.com/community/>

GROUNDWORK OPEN SOURCE, INC.

139 Townsend Street, Suite 100
 San Francisco, CA 94107

Toll-free: (866) 899-4342

Tel: (415) 992-4500

Fax: (415) 947-0684

info@groundworkopensource.com

www.groundworkopensource.com

GroundWork Monitor Community Edition provides the essential IT monitoring functions needed for basic network visibility and control – for free.

GroundWork Monitor Community Edition combines the capabilities of dozens of open source projects including Nagios®, RRDtool and nmap, into a unified package providing expansive monitoring functionality: from generating and aggregating status information, events and performance data, to graphing and reports. It evaluates the status, events and performance of monitored devices and presents these results in an easy to use web application. This open source project is available under GPL v2.

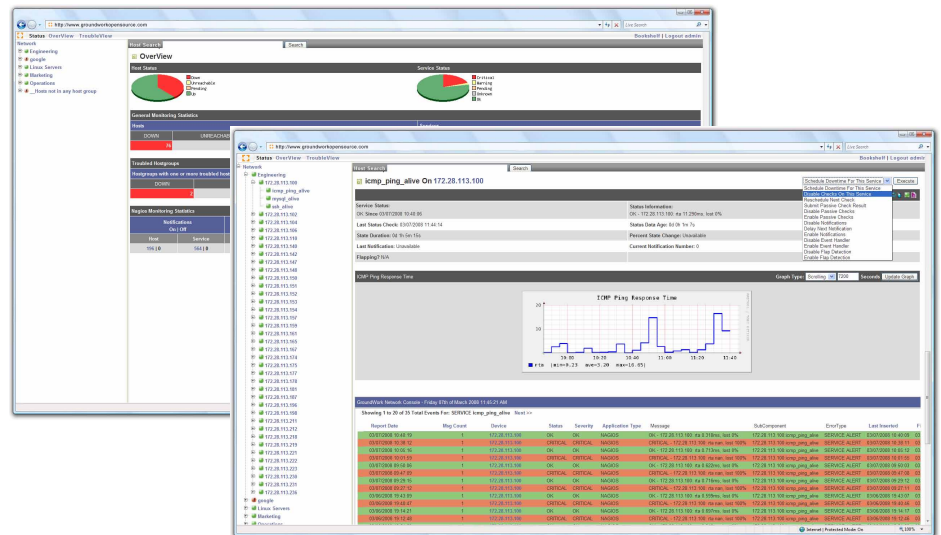
FEATURES

- **Easy Installation Wizard:** gets you up and monitoring quickly.
- **Point-and-Click:** web-based GUI makes configuration a snap.
- **Availability Monitoring:** to alert if devices are up or not.
- **Ability To Monitor:** servers, devices, services and applications.
- **Performance Monitoring:** to give insight on latency before a server is offline.
- **Basic Auto-Discovery and Configuration Tools:** to help identify additional devices on the network.
- **Built On the Same Open Architecture:** as GroundWork Monitor Professional and Enterprise, Community Edition is easy to integrate and customize, upgrading is seamless

IS GROUNDWORK MONITOR COMMUNITY EDITION RIGHT FOR ME?

GroundWork Monitor Community Edition provides the essential functions to monitor unlimited number of devices from a single server, dependent upon your environment and system management needs.

It is a great open source solution for IT shops that use several open source monitoring packages and want to consolidate into a single monitoring solution. The Community Edition is also appropriate for those with in-house expertise to oversee their own initial deployment, configuration, and ongoing maintenance..



DOWNLOAD GROUNDWORK MONITOR COMMUNITY EDITION

<http://groundworkopensource.com/community/downloads/>

PARTICIPATE IN OUR FORUMS

Have a question? Look to our extensive and active forums at

<http://www.groundworkopensource.com/community/forums/>